



Quality is the future!

Ingenieurbüro

Systemhaus

**CSAE** GmbH

Computertechnik • Steuerungstechnik • Automatisierungstechnik • Elektroplanung

# PEK3 & CSAE

The PICK-BY-LIGHT & EASYTUBE complete solution  
– tailor made from one source



[www.pek3.com](http://www.pek3.com)

[www.csa.de](http://www.csa.de)

# PICK BY LIGHT

## Quality improvement through process security

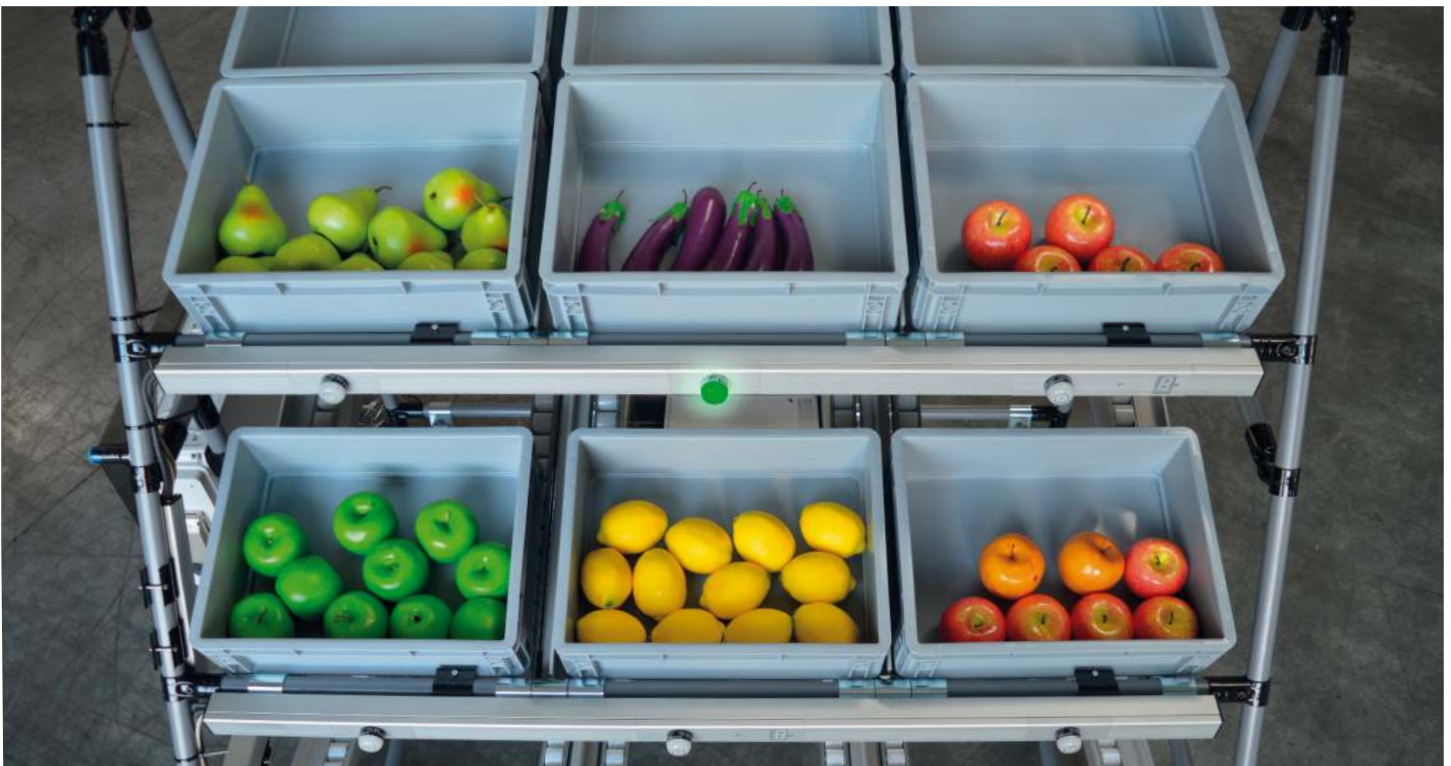
**Pick-by-Light** is an excellent way to improve quality in the picking of your products. Identifying the required items with a light signal can considerably reduce picking errors in logistics and the resulting incorrect installations in assembly.

Long-term availability and access confirmation can be assured through the setup of industrial components adapted to your requirements. The **Pick-by-Light** systems can be retrofitted on all existing **EASYTUBE** racking. Individual components are exchanged without the use of tools because they are equipped with standard plug contacts.

We offer an intuitive to use and service-friendly **Pick-by-Light** complete solution with racking system for your business.

### Application method

Each picking compartment has a Pick-by-Light component and at least one acknowledgement button. This tells the employee the correct compartment from which the goods are to be removed. When the article is removed, acknowledgement is required by touching the Pick-by-Light component. Based on the Japanese principle of "Poka Yoke", unintentional errors are thus methodically and systematically avoided even during picking or detected in a timely manner.



## Versions

### Pick-by-Light:

The picking order is prepared. Compartments for removal are identified in colour with an indicator. Upon removal, the **Pick-by-Light** component is touched for acknowledgement and the indicator turns off.

### Access control:

The picking order is prepared. Compartments for removal are identified in colour with an indicator. When the goods are removed, access is recorded by a camera. The compartment indicator turns off as soon as the goods have been removed. No additional acknowledgement is required. If one attempts to remove something from the compartment “accidentally”, a red indicator lights up immediately.

### FIELDS OF APPLICATION

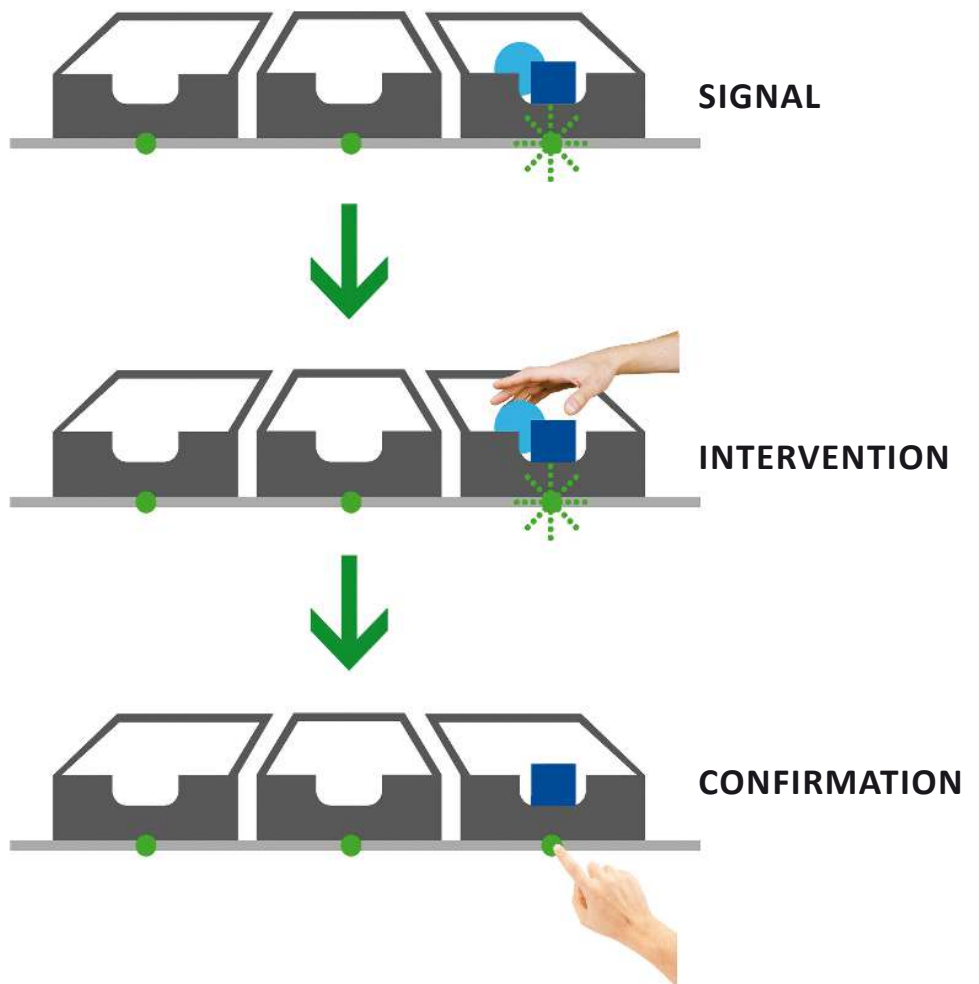
- Assembly and logistics
- Quality assurance
- Fill level monitoring
- Series and pre-series production

### COMMISSIONING

- Easy to install below the compartments
- Configuration of the compartment contents via web front-end is possible
- Retrofitting of existing rack systems

### OPERATION

- No additional control computer required
- Sending and receiving of telegrams via TCP, UDP and http to higher-level or upstream systems
- OPC connection possible



## PICK BY LIGHT – YOUR BENEFITS

- Powerful and scalable system
- Fast implementation and convenient web configuration
- Compatible with various controls
- Multiple simultaneous access possible
- Low cost of materials
- Flexible for use in all facilities
- Straightforward, low-cost maintenance thanks to pluggable components (IP67 or IP20)
- Can be adapted to your conditions
- Seven-segment indicator
- Integration with inventory management programs is possible

## EASYTUBE – YOUR BENEFITS

- Individual rack systems – tailor-made according to your wishes
- Flexible, versatile, modular – the structures are not welded but joined with screw connections
- Ergonomic design
- Excellent rate of return
  - Little waste – connecting elements and tubes are reusable
  - Straightforward reconfiguration
  - Durable
  - Maintenance-free
  - No special technical skills or tools required
  - Various surface finishes available for tubes and connecting elements
  - Large selection of accessories to optimise your applications: Wheels and casters, roller conveyors, label holders, adjustable feet, couplings etc.

**Let's talk about your project!**



### PEK3 GMBH

Hans-Urmiller-Ring 24 D-82515 Wolfratshausen  
Telefon +49 8171 4222-0 Fax +49 8171 4222-24  
easytube.de@pek3.com



### CSAE GmbH

Papenstieg 2 D-38442 Wolfsburg  
Telefon +49 5362 50126-0 Fax +49 5362 50126-99  
info@csae.de